

About CTDX.....Making programming easier.

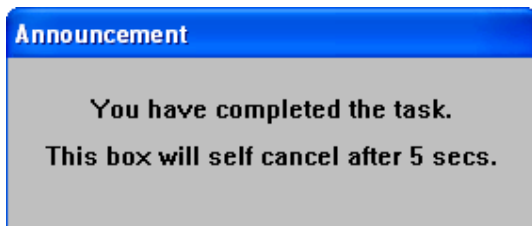
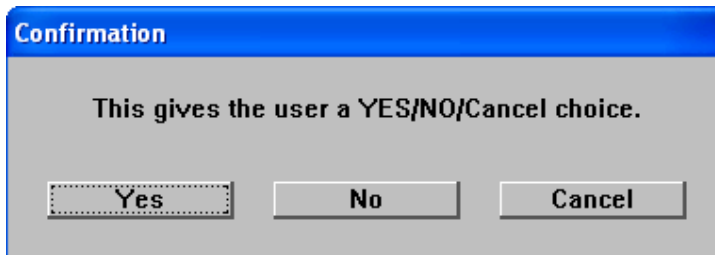
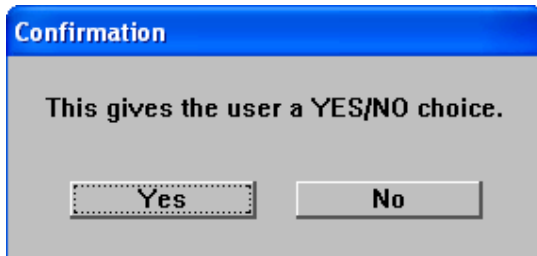
CTDX is a library module that is virtually identical to the TDX library and contains a large number of sub-routines that duplicate similar routines in the TrueDIAL library. The dialog box itself is a modal window, i.e. you cannot exit the dialog box unless you click one of the buttons provided. Unlike the dialog boxes provided by the TrueDIAL library, in CTDX the dialog box is sized according to the text or the number of buttons, whichever is greatest. The other big advantage is that you can set the font and the colors used for the font and the background. The range of dialog boxes includes all those available with TrueDIAL plus several more. The difference between CTDX and TDX libraries is that the internal objects inside the dialog boxes, such as push buttons and lists, are generated by TrueCTRL in the TDX library, and by CTX in the CTDX library. This difference is important when using TrueBASIC version 5.5b19 because some TrueCTRL objects do not work properly.

In terms of programming, CTDX uses exactly the same sub-routine calls as the TrueDIAL library, except the prefix TD_ is changed to TDX_. Everything else works in exactly the same way as TrueDIAL. This is the same notation as the TDX library, so code written for TDX also works for CTDX.

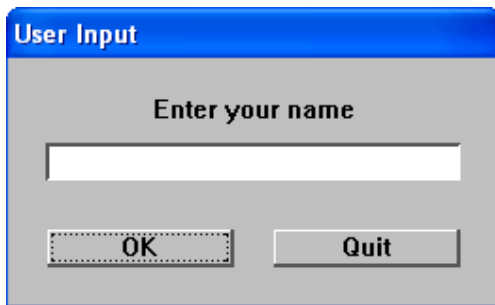
What do CTDX dialog boxes look like.



These two boxes demonstrate how the dialog box size is determined by the text or the number of buttons.



The announce box returns to your program without a response from the user. Normally a PAUSE statement allows the user to read the message.

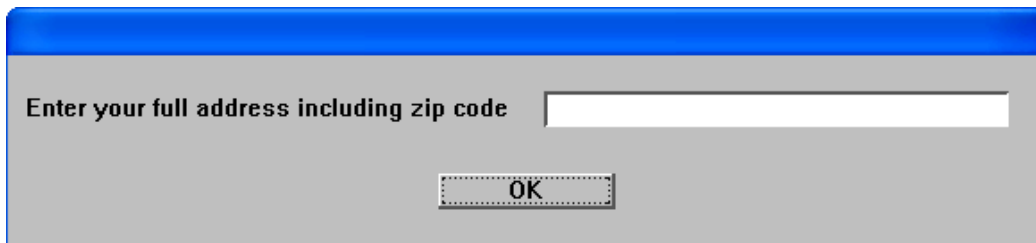


User Input

Enter your name

OK Quit

A dialog box with a blue title bar labeled "User Input". The main area is gray and contains the text "Enter your name" above a single-line text input field. Below the input field are two buttons: "OK" and "Quit".

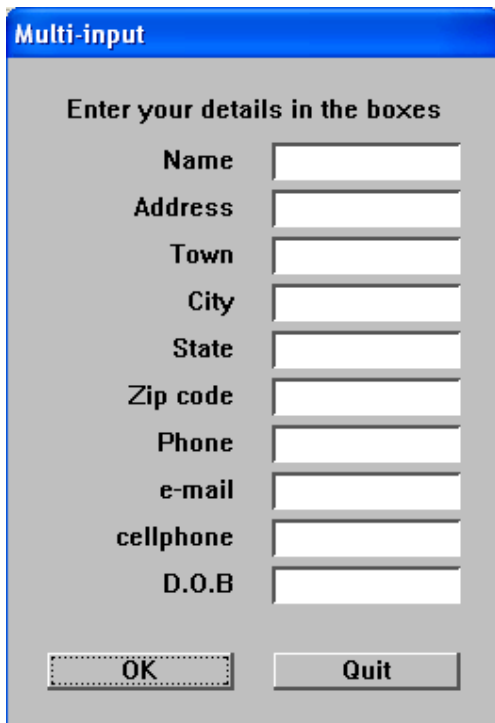


Enter your full address including zip code

OK

A dialog box with a blue title bar. The main area is gray and contains the text "Enter your full address including zip code" above a single-line text input field. Below the input field is a single button labeled "OK".

The line-input box accepts commas and punctuation.



Multi-input

Enter your details in the boxes

Name

Address

Town

City

State

Zip code

Phone

e-mail

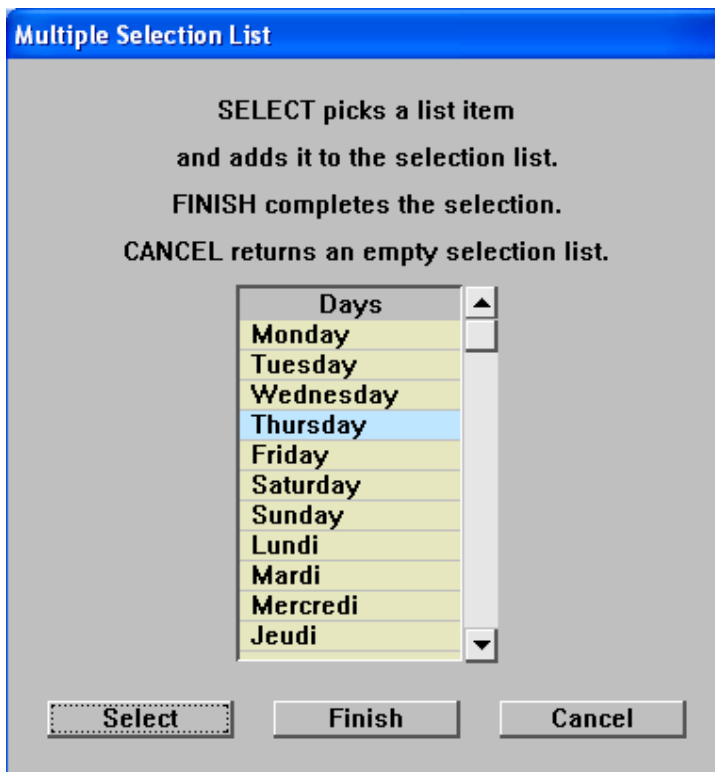
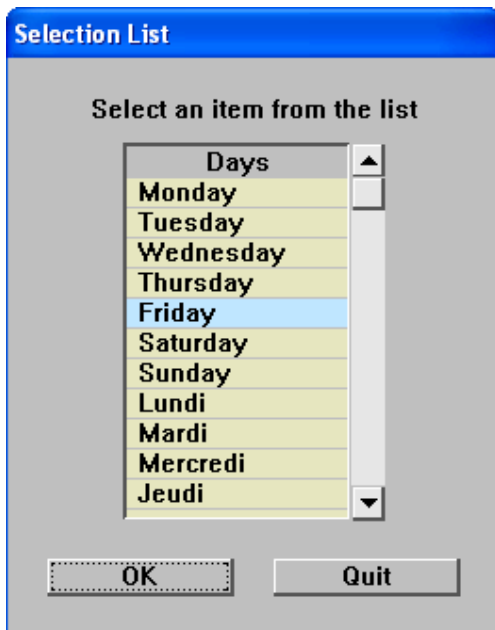
cellphone

D.O.B

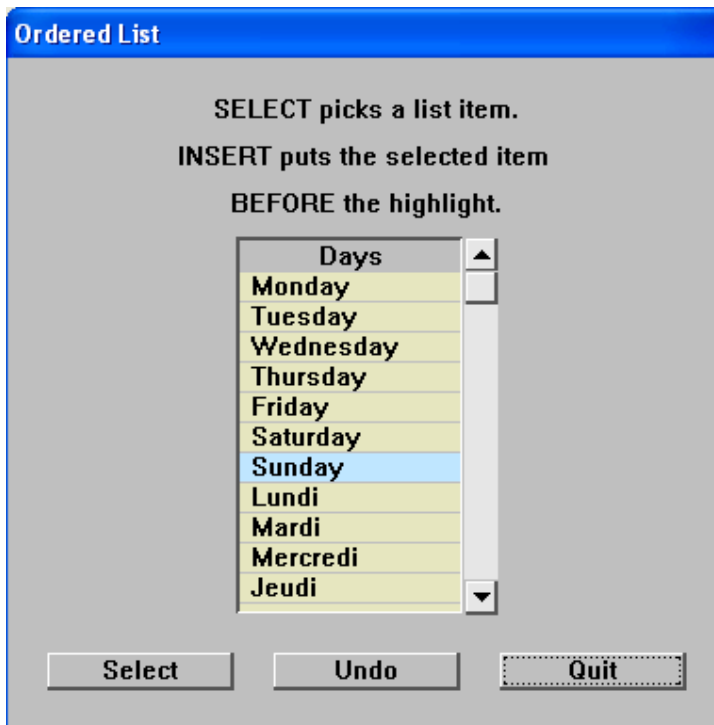
OK Quit

A dialog box with a blue title bar labeled "Multi-input". The main area is gray and contains the text "Enter your details in the boxes" above a list of ten labels, each followed by a single-line text input field: Name, Address, Town, City, State, Zip code, Phone, e-mail, cellphone, and D.O.B. At the bottom are two buttons: "OK" and "Quit".

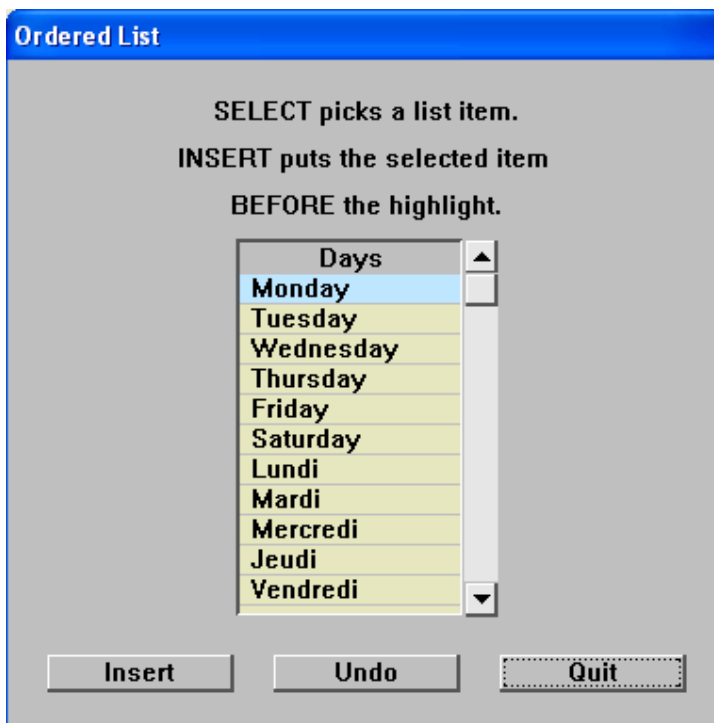
Up to 10 inputs are allowed.

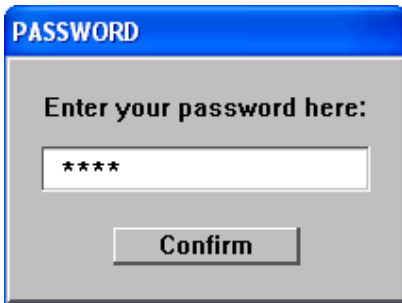


This dialog box returns an array containing all the items selected by the user.



Once an item has been selected the user can insert that item elsewhere in the list.





Typed characters are replaced by asterisk symbols.

