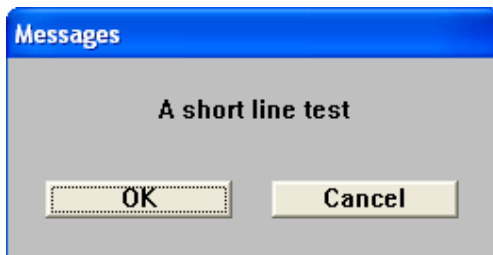
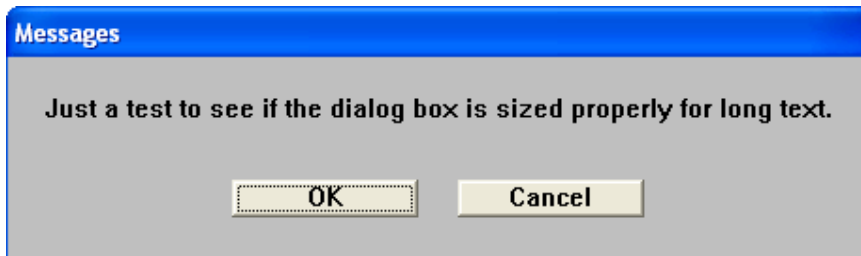


## ***About TDX.....Making programming easier.***

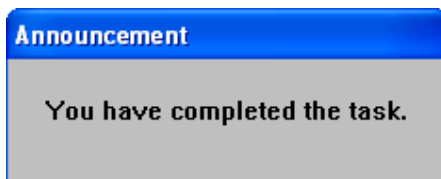
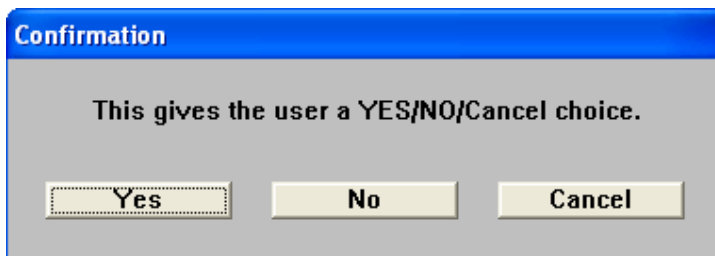
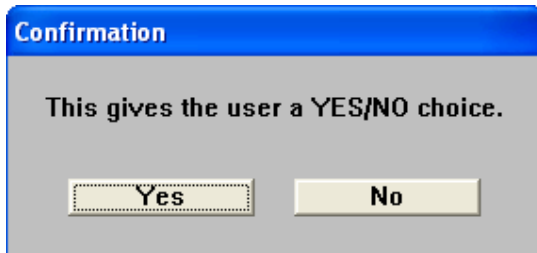
TDX is a library module containing a large number of sub-routines that duplicate similar routines in the TrueDIAL library. The dialog box itself is a modal window, i.e. you cannot exit the dialog box unless you click one of the buttons provided. Unlike the dialog boxes provided by the TrueDIAL library, in TDX the dialog box is sized according to the text or the number of buttons, whichever is greatest. The other big advantage is that you can set the font and the colors used for the font and the background. The range of dialog boxes includes all those available with TrueDIAL plus several more.

In terms of programming, TDX uses exactly the same sub-routine calls as the TrueDIAL library, except the prefix TD\_ is changed to TDX\_. Everything else works in exactly the same way as TrueDIAL.

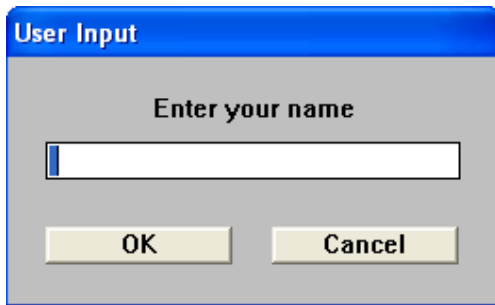
## ***What do TDX dialog boxes look like.***



These two boxes demonstrate how the dialog box size is determined by the text or the number of buttons.



The announce box returns to your program without a response from the user. Normally a PAUSE statement allows the user to read the message.

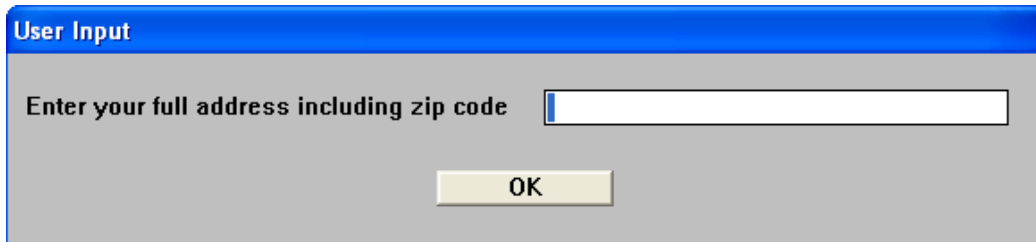


**User Input**

Enter your name

OK Cancel

A dialog box with a blue title bar labeled "User Input". The main area is gray and contains the text "Enter your name" above a single-line text input field. Below the input field are two buttons: "OK" and "Cancel".



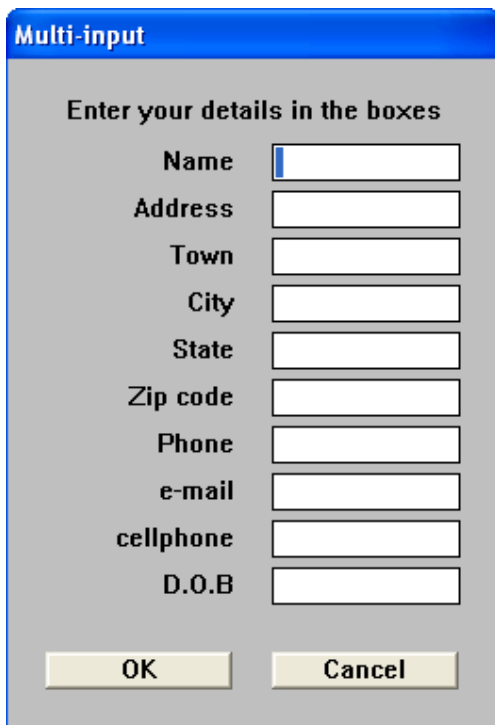
**User Input**

Enter your full address including zip code

OK

A dialog box with a blue title bar labeled "User Input". The main area is gray and contains the text "Enter your full address including zip code" above a single-line text input field. Below the input field is a single button labeled "OK".

The line-input box accepts commas and punctuation.



**Multi-input**

Enter your details in the boxes

Name

Address

Town

City

State

Zip code

Phone

e-mail

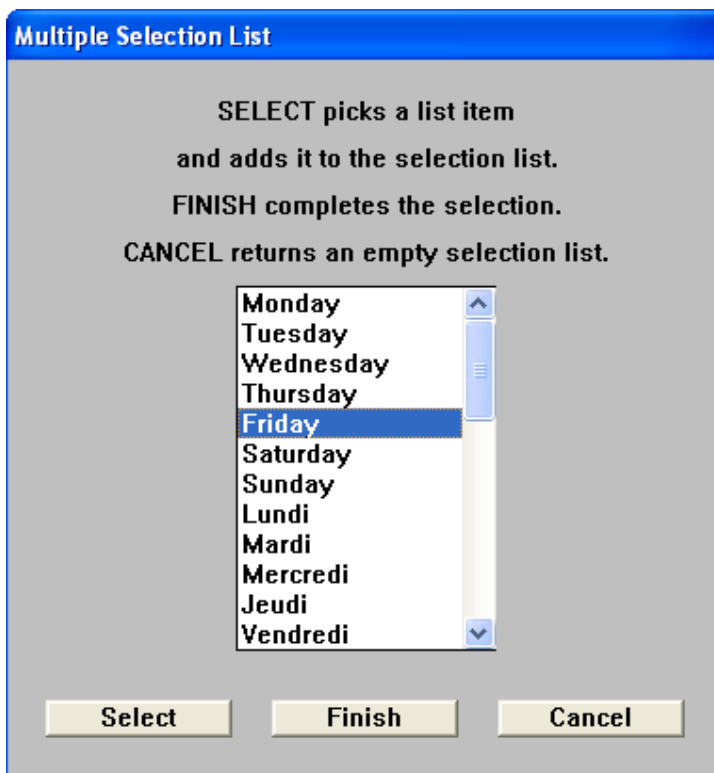
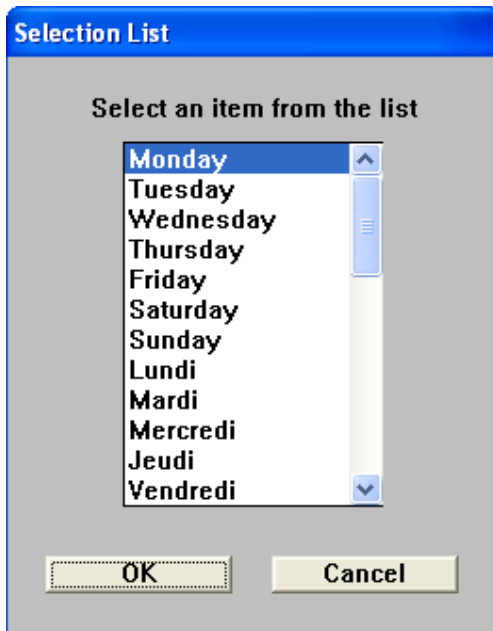
cellphone

D.O.B

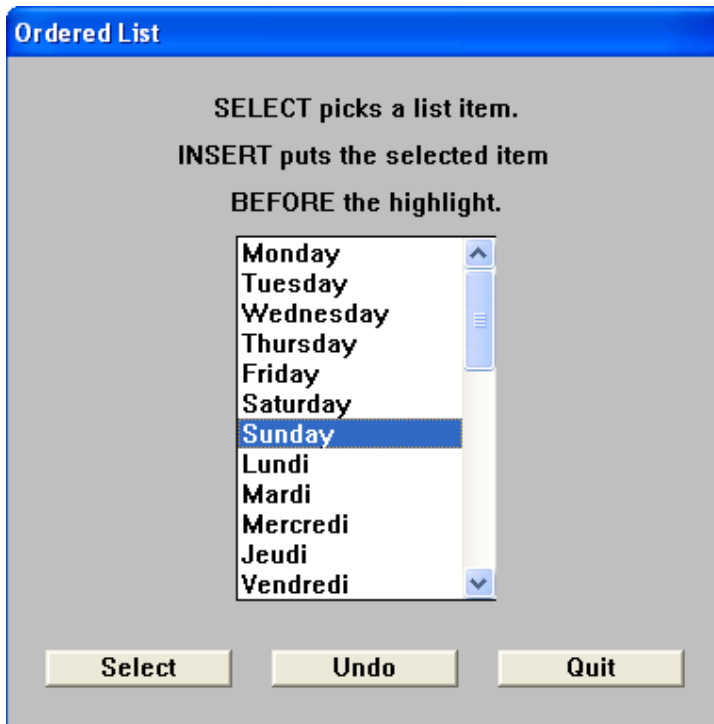
OK Cancel

A dialog box with a blue title bar labeled "Multi-input". The main area is gray and contains the text "Enter your details in the boxes" above ten single-line text input fields, each with a label to its left: Name, Address, Town, City, State, Zip code, Phone, e-mail, cellphone, and D.O.B. Below the input fields are two buttons: "OK" and "Cancel".

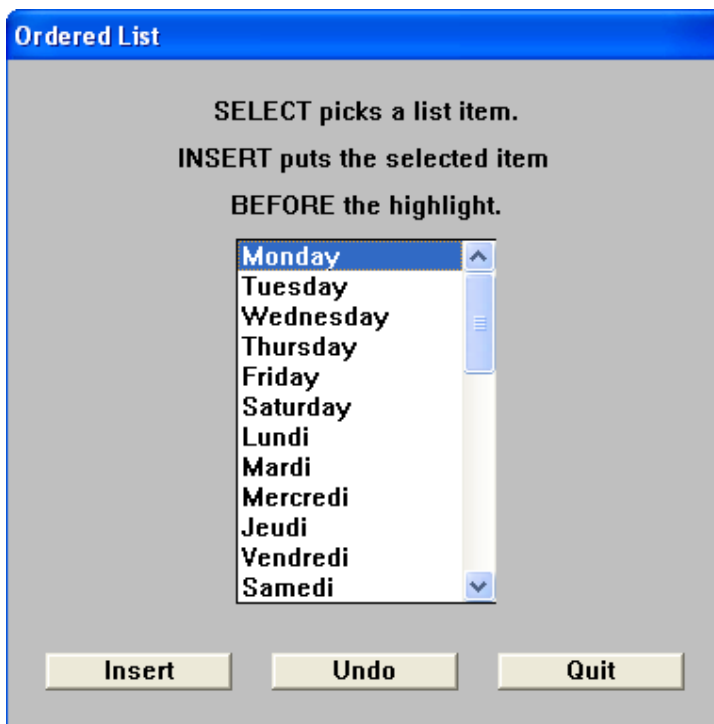
Up to 10 inputs are allowed.

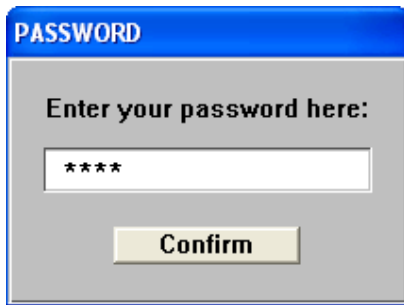


This dialog box returns an array containing all the items selected by the user.



Once an item has been selected the user can insert that item elsewhere in the list.





Typed characters are replaced by asterisk symbols.

