

## ***About TrueHELP.....Making programming easier.***

Although many programmers assume their programs are intuitive and easy to operate, in practice users often need help in order to find out how to use the program. It is good practice to include a HELP feature in all programs.

The TrueHELP library module provides the programmer with a ready made HELP window containing a TXED control object from the TrueCtrl library. An alphabetical index and a search edit field are also included in this window.

Your main program only needs a LIBRARY statement to reference the TrueHELP library and a single line CALL help to show the help window.

Most importantly the TrueHELP library uses plain text files as the source of the help text. In this way the help text can also be used as the basis of a program manual.

The help notes, in the form of paragraphs, do not have to be in order because the TrueHELP library module re-arranges these notes alphabetically. Additional notes can be added to the original source text by the user, and existing notes can be edited in the HELP window itself. Typically the plain text help file is constructed from portions of text with a heading inside angle brackets, as follows:

### **<QUIT>**

You can quit the program by clicking on the QUIT button, or by pressing the keyboard ESC key, or by clicking the close window symbol (cross - top right).

### **<Starting a help session>**

Click on the HELP button. A small window will appear in the upper right portion of the screen. This window contains a drop-down edit list operated by a "down arrow" button to the right of the list. The list contains an alphabetically arranged list of headings from the help source file. To the right of the list is a button marked "FIND". Below the button is a text editing area. In this area is the initial message "Select topic and click FIND". The text area is where the notes associated with the selected heading or topic are displayed.

### **<Help Topics list>**

As instructed, the user must click the mouse on the drop-down button to reveal the list of topics or headings. As soon as the user clicks on a topic, the list will retract leaving the topic in the edit field above the text editing area.

### **<Finding help topics>**

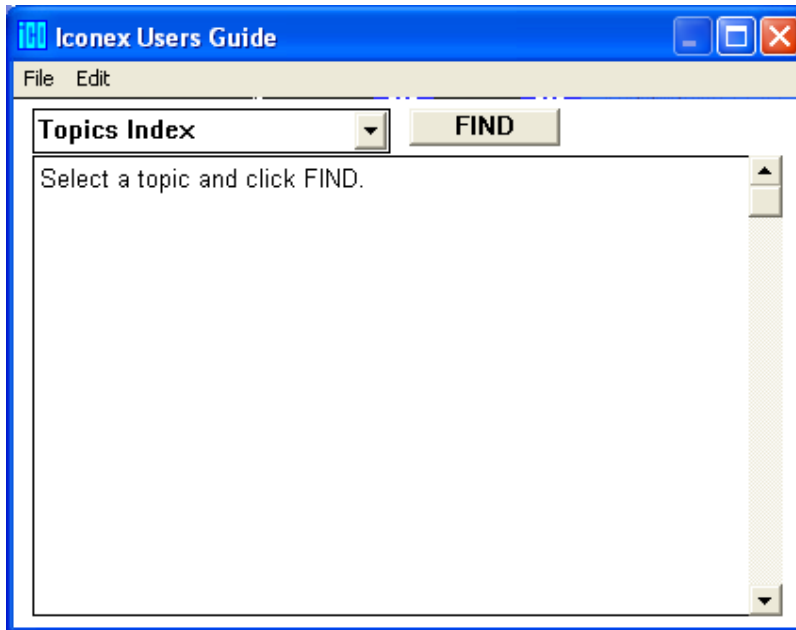
The user must click the "FIND" button in order to display the text associated with a topic.

### **<Help text wrapping>**

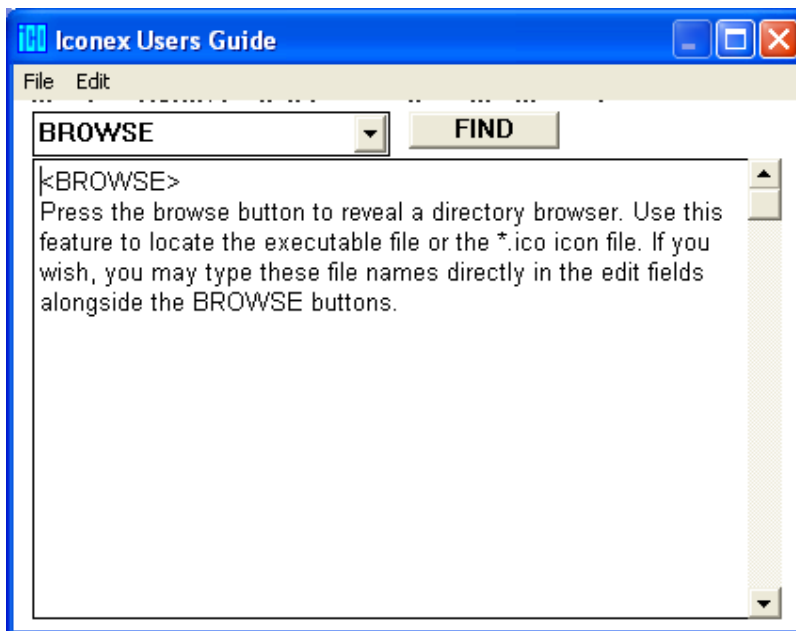
The text is automatically wrapped.

The order of the text portions is unimportant and the spacing between portions of text is also unimportant. There is no practical limit to the number of text portions in the help file.

## What TrueHELP looks like.



Click the button on the right of the topics index to show the index. Select a topic and then click the button labelled FIND.



The selected topic was BROWSE.

If the topic you want is not in the index then click inside the topics index box and type a keyword, and then click the FIND button.